

State Program Report Redesign Proposal

Document 1: Data Model, Service List, Data Intersections and Data Element Tables

Background

ACL/AoA is in the process of redesigning the State Program Report (SPR) and the software system used to submit data. We would like your feedback on this document which serves as one reference for the proposed changes to the SPR. Please note that comments already submitted are being tracked. In most cases those comments have not been incorporated in the proposal presented here but will be considered with comments received in response to this call for input. We welcome any feedback but have listed specific areas where we encourage you to focus your attention (focus areas are not inclusive of all proposed changes).

Instructions

Please remember to use the [Instructions and Feedback Template](#) to provide your comments. The template will help ACL/AoA organize your comments as we try to incorporate them in the SPR redesign. Please send your feedback to SPRredesign.comments@acl.hhs.gov by **November 28, 2016**.

Related Documents:

- [Selected Data Element Definitions](#)
- [Instructions and Feedback Template](#)

Thank you - ACL's Office of Performance and Evaluation

Document Layout and Key Focus Areas for Comment

Section 1: Data Model

The **Data Model** (see page 4) is a representation of the two main data components (Network and Service) within the proposed revised SPR and the sub-components that correspond. We welcome general feedback indicating if the Data Model is a feasible and logical structure for the data submission. If possible, please provide specific feedback on the Self Direction and Respite Voucher Network Sub-Component positions.

In the proposal Self Direction is considered a mechanism or approach to service delivery and is not a service. This is the rationale for placing the sub-component in the Network Component. The services individuals obtain using self-direction if known should be counted in the Service Component (e.g. personal care). ACL/AoA is seeking feedback on this sub-component.

In the proposal Respite Voucher is considered a mechanism or approach to service delivery and not a service. This is the rationale for placing the sub-component in the Network Component. The respite services that individuals obtain using vouchers, if known, should be counted in the Service Component (e.g. In-Home Respite). ACL/AoA is seeking feedback on this sub-component.

Section 2: Service List by Demographic Data Requirement

The **Service List by Demographic Data Requirement** (see pages 5 and 6) is a representation of proposed services to be reported for older adults, caregivers of older adults, and caregivers of children and adults with disabilities. The goal of the diagram is to display which services are to be reported and which require submission of aggregate demographic information. We welcome comments on any service in the diagram. If possible, please provide specific feedback on the following key focus areas (not inclusive of all proposed changes): Legal Assistance becoming a non-registered service that requires the submission of aggregate demographic data; the addition of an options counseling service; the separation of the caregiver program services of counseling, support groups and training; and the separation of access assistance into two services (case management and information and assistance).

The proposal expands the collection of data on the Legal Assistance service including reporting of the unduplicated number of people served and aggregate demographic and consumer characteristics. A separate category of non-registered service requiring demographic data is proposed to indicate that attorney-client privilege and client confidentiality are to be maintained. Identifiable consumer data is not to be maintained outside of the Legal Assistance providers system of record.

The proposal separates the National Family Caregiver Support Program services of counseling, support groups, and training. Each service would be reported separately. ACL/AoA is requesting feedback on whether each service should be consider registered and be included in the aggregate demographic data submission.

The proposal includes a new service, options counseling. ACL/AoA would like feedback on whether options counseling should be included as a separate reportable service with demographic data. One alternative proposal is to expand case management definition to capture options counseling services. A second option is to report options counseling services under "other services." ACL/AoA is seeking input on the definition of the options counseling service. Please refer to the **Selected Data Element Definitions** document, which you may also comment on, for further detail.

The proposal separates the service of Access Assistance under the National Family Caregiver Support Program into two services (1) Access Assistance: Case Management and (2) Access Assistance: Information and Assistance. ACL/AoA's

rationale is that the current Access Assistance service is confusing and includes both case management services and information and assistance that are consistent with the older adults services provided under Title III-B Home and Community Based Supportive Services. The proposed change better defines these services, allows for alignment across these programs and improves the interpretation of the data submitted. ACL/AoA is seeking comment on this proposed change.

Section 3: Data Intersections

Many SPR demographic categories cross to form data elements (e.g. age and poverty status). The **Data Element Intersections** tables (see pages 7-9) represent which data categories intersect to form data elements. The current SPR includes intersections between all the ADL and IADL subcategories and intersections between all age categories and all ADL and IADL subcategories. The ACL/AoA proposal is to reduce those intersections thereby greatly reducing the total data elements submitted. The tables in the section are two representations that illustrate intersections between demographic data. Table 3.1 is a summary count of all proposed intersections. Table 3.2 provides details of the data sub-categories. ACL/AoA is seeking comment on the utility of decreasing data category intersections.

Section 4: Data Element Tables

The **Data Element Tables** (see pages 12-46) display the data to be collected and the data attributes (e.g. data codes and values). The goal of the table is to display all data elements along with their attributes by component and sub-component. We welcome general feedback on any data element or its attribute. If possible, please provide specific feedback on data elements proposed under the subcomponents: service providers, senior centers/focal points, business acumen and legal assistance; as well as, gender identity and sexual orientation data elements in the demographic sub-components. Data definitions and alternate definitions are provided in the accompanying document **Selected Data Element Definitions** document.

The proposal includes reductions in data collected related to service providers in an effort to reduce reporting burden. ACL/AoA is seeking feedback on the proposal to limit data collection on service providers by specific service to home-delivered nutrition; congregate nutrition; and information and assistance.

An important consideration for the SPR redesign is the need to reduce reporting burden and insure data are relevant at an aggregated, state-level. The proposal includes reductions in the data collected related to senior centers and focal points. ACL/AoA is seeking feedback on the proposed reduction as well as recommendations for alternative data that would provide useful information.

The proposal includes a business acumen sub-component (Table 2.6). ACL/AoA is seeking recommendations for data elements for this sub-component that would provide valuable information to the National Aging Network.

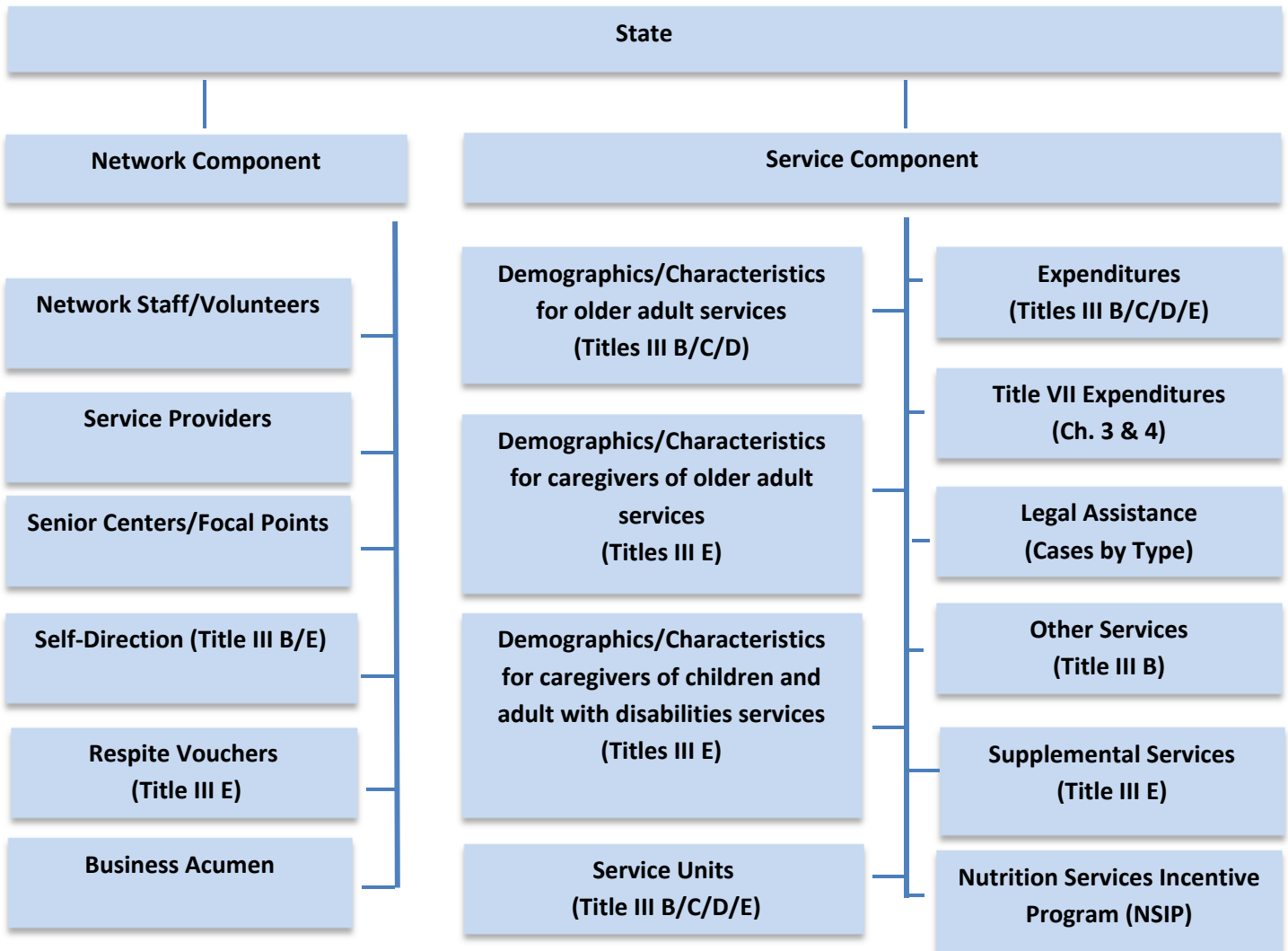
The proposal expands the collection of data on the legal assistance service (Table 3.7) including reporting of the unduplicated number of people served; aggregate demographic and consumer characteristics; and cases type. ACL/AoA is seeking comment on the collection of case type. One option is to collect case type on all cases open during the fiscal year reported. An alternate option is to collect case type on all cases closed during the fiscal year. ACL/AoA is seeking input on the benefits and disadvantages of each option.

The proposal includes collection of gender identity and sexual orientation data. ACL/AoA is seeking feedback on the Aging Network's experience collecting these data elements.

Section 1: Data Model

The **Data Model** below is a representation of the two main components (Network and Service) within the proposed revised SPR and the sub-components that correspond. We welcome general feedback indicating if the Data Model is a feasible and logical structure for the data submission. If possible, please provide specific feedback on the Self-Direction and Respite Vouchers Network Sub-Component positions.

Data Model



Section 2: Service List by Demographic Data Requirement

The **Service List by Demographic Data Requirement** on the following pages is a representation of services for older adults, caregivers of older adults, and caregivers of children and adults with disabilities. The goal of the diagram is to display proposed services to be reported and which require submission of aggregate demographic information. We welcome general feedback indicating if the diagram is understandable and/or useful. If possible, please provide specific feedback on the following key focus areas (not inclusive of all proposed changes): (1) Legal Assistance becoming a non-registered service that requires the submission of aggregate demographic data; (2) the addition of an options counseling service; (3) the separation of the caregiver program services of counseling, support groups and training; (4) and the separation of access assistance into two services (case management and information and assistance).

Service List by Demographic Data Requirement – Title III B/C/D

Services for Older Adults (Titles III B/C/D)	
Registered Services, Demographic Data Required	Non-Registered, No Demographic Data Required
1. Personal Care	11. Transportation
2. Homemaker	12. Nutrition Education
3. Chore	13. Information and Assistance
4. Home Delivered Meals	14. Health Promotion: Evidence-Based
5. Adult Day Care/Health	15. Health Promotion: Non Evidence-Based
6. Case Management	
7. Assisted Transportation	
8. Congregate Meals	
9. Nutrition Counseling	Non-Registered Demographic Data Required
10. Options Counseling	16. Legal Assistance

- Demographic data are required for services 1-11.
- Data on Activities of Daily Living (ADLs) and Instrumental Activities of Daily Living (IADLs) are required for services 1-6.
- Nutrition Risk Scores are required for services 4, 8, and 9.

Service List by Demographic Data Requirement - Title III E

Services for Caregivers of Older Adults, Children and Adults with Disabilities (age under 60) (Title III E)

Demographic Data Required	No Demographic Data Required
1. Counseling	9. Access Assistance: Information and Assistance
2. Support Groups	10. Information Services (public)
3. Training	
4. In-Home Respite	
5. Facility-based Respite (day)	
6. Facility-based Respite (overnight)	
7. Supplemental services	
8. Access Assistance: Case Management	

Section 3: Data Element Intersections

Many SPR demographic categories cross to form data elements (e.g. age and poverty status). The **Data Element Intersections** tables represent which data categories intersect to form data elements. The current SPR includes intersections between all the ADL and IADL subcategories and intersections between all age categories and all ADL and IADL subcategories. The ACL/AoA proposal is to reduce those intersections thereby greatly reducing the total data elements submitted. The current SPR data intersections result in over 7,000 data cells. The proposal would reduce the total to less than 2,000. The tables below are two representations that illustrate intersections between demographic data. Table 3.1 is a summary count of all proposed intersections. Table 3.2 provides details of the data sub-categories.

**Table 3.1 ADL/IADL Characteristics of Elderly Consumers Receiving Registered Services
(7 service combinations; 8 if Legal Services include demographic data)**

Category	# of Sub-categories	Total	At or Below Poverty	Minority	ADL 3+	IADL 3+	Approximate Data Elements	Approximate Data Elements (if Legal Services is included)
Total	1	X	X	X	X	X	28	32
Age	6	X	X		X	X	168	192
Gender	4	X	X		X	X	112	128
Sexual Orientation	6	X	X		X	X	168	192
Geography	3	X	X		X	X	84	96
Poverty Status	3	X		X	X	X	84	96
Household Status	3	X	X		X	X	84	96
Ethnicity	3	X	X		X	X	84	96
Race	6	X	X		X	X	168	192
Minority Status	3	X	X		X	X	168	192
ADL	4	X	X				56	64
IADL	4	X	X				56	64
Nutrition Risk Score for Home Delivered Meals only	3	X	X		X	X	36	36
Total data elements							1196	1488

Table 3.2 Detail Data Element Intersections

Consumer Characteristic	Total	At or Below Poverty	Minority	ADL 3+	IADL 3+
Total Consumers	X	X	X	X	X
Age					
Age: <60	X	X		X	X
Age: 60 -64	X	X		X	X
Age: 65-74	X	X		X	X
Age: 75 - 84	X	X		X	X
Age: 85+	X	X		X	X
Age Missing	X	X		X	X
Gender					
Female	X	X		X	X
Male	X	X		X	X
Transgender	X	X		X	X
Gender Missing	X	X		X	X
Sexual Orientation					
Gay	X	X		X	X
Lesbian	X	X		X	X
Straight	X	X		X	X
Bisexual	X	X		X	X
Something else	X	X		X	X
Sexual Orientation Missing	X	X		X	X
Geography					
Rural	X	X		X	X
Non-Rural	X	X		X	X
Rural Missing	X	X		X	X
Poverty Status					
At or Below Poverty	X		X	X	X
Above Poverty	X			X	X
Poverty Status Missing	X			X	X
Household Status					
Lives Alone	X	X		X	X
Lives with Others	X	X		X	X
Household Status Missing	X	X		X	X
Ethnicity					
Hispanic or Latino	X	X		X	X
Not Hispanic or Latino	X	X		X	X
Ethnicity Missing	X	X		X	X
Race					
American Indian or Alaska Native	X	X		X	X
Asian	X	X		X	X

Consumer Characteristic	Total	At or Below Poverty	Minority	ADL 3+	IADL 3+
Black or African American	X	X		X	X
Native Hawaiian or Other Pacific Islander	X	X		X	X
White	X	X		X	X
Race Missing	X	X		X	X
Minority Status					
Minority	X	X		X	X
Not Minority	X	X		X	X
Minority Status Missing	X	X		X	X
ADL Limitations					
0	X	X			
1-2	X	X			
3+	X	X			
ADL Limitations Missing	X	X			
IADL Limitations					
0	X	X			
1-2	X	X			
3+	X	X			
IADL Limitations Missing	X	X			
Nutrition Risk Score (nutrition services only)					
0-5	X	X		X	X
6+	X	X		X	X
Score Missing	X	X		X	X

Section 4: Data Element Tables

The **Data Element Tables** display the data to be collected and the data attributes (e.g. data codes and values). The goal of the table is to display all data elements along with their attributes by component and sub-component. We welcome feedback on any data elements and attribute. If possible, please provide specific feedback on data elements proposed under the subcomponents: service providers, senior centers/focal points, business acumen, and legal assistance; as well as, gender and sexual orientation data elements in the demographic sub-components. Data definitions and alternate definitions are provided in the accompanying document **Selected Data Element Definitions**.

Each data element can be described by a series of eight metadata attributes which are listed below. If the data attribute is the same for all data elements within a component or subcomponent, it will be noted at the beginning of the component table. The attribute column will not be included as to provide additional space for other attribute descriptions.

The Data Attributes are as follows:

1. **MD – Metadata**
2. **Data Element** – Data element is a name, title, or short descriptor for a specific data element.
3. **Element Description** – Briefly summarizes a data element and its purpose.
4. **Required** – Indicates whether reporting of the data element by states is mandatory
5. **Quantifier** – Identifies whether there can be just one value reported for a data element, or if more than one value can be provided.
6. **Services** – Identifies that the data element is collected specific services or combination of services. For example, the Nutritional Risk Scores are collected for Home Delivered Meals, Congregate Meals, and Nutrition Counseling services only. Services attribute does not apply to all sub-components.
7. **Type** – Indicates the data type for a given data element, e.g., whether it corresponds to a date, a coded value, or a string.
8. **Codes & Values** – For data elements with coded values, specifies the specific codes used and their associated values.
9. **Business Rules & Notes** – Details specific business rules, such as how many characters may be included in a string element, or the format of a date.

Each data element is identified by a unique combination of element number and data component abbreviation.

Element Number: The element number provides a way to refer to data elements. Element numbers are sequential within a data component/sub-component.

Data Component: Each taxonomic component or subcomponent is prefixed as follows to facilitate grouping and categorization:

NC – Network Component

- SV – Staff/Volunteers subcomponent
- SP – Service Providers subcomponent
- SF – Senior Centers/Focal Points subcomponent
- SD – Self-Directed (Title III B/E) subcomponent
- RV – Respite Vouchers (Title III E) subcomponent
- BA – Business Acumen subcomponent

SC-Service Component

- CD-Consumer Demographics/Characteristics for Select Services (Title III B/C/D) subcomponent
- CG-Caregiver of Older Adults Demographics/Characteristics for Select Services
- (Title III E) subcomponent

- CC-Caregiver of Children and Adults with Disabilities Demographics/Characteristics for
- Select Services (Title III E) subcomponent
- SU-Service Units (Title III B/C/D/E) subcomponent
- EX-Expenditures (Title III B/C/D/E) subcomponent
- VII-Title VII Expenditures (Chapters 3 & 4) subcomponent
- LA-Legal Assistance (Title III B) subcomponent
- SS-Supplemental Services (Title III E) subcomponent
- OS-Other Services (Title III B/C/D) subcomponent
- NS-Nutrition Services Incentive Program (NSIP) subcomponent

Section 4: Data Element Tables

1. Transmission Metadata Component

States will submit elements identifying and contextualizing their reported data.

Element Number	Data Element	Element Description	Required	Quantifier	Type	Codes and Values	Business Rules/Notes
MD1	State ID	Geographical location of the data submission by State and/or US Territory	Yes	Single	Alphanumeric Code	ANSI INCITS 38:2009 standard 2-letter state codes	
MD2	Reporting Period	Federal Fiscal Year 10/01/20XX-09/30/20XX	Yes	Single	String	N/A (not a coded element)	<ul style="list-style-type: none">• Four digit year identifier: YYYY
MD3	Dataset ID	Unique identifier for the data included in a data transmission	Yes	Single	String	N/A (not a coded element)	<ul style="list-style-type: none">• Must include component or subcomponent identification

2. Network Component

The Network component includes data regarding the state network.

Element Number	Data Element	Element Description	Required	Quantifier	Type	Codes and Values	Business Rules/Notes
NC1	Single PSA	State is a single Planning and Service Area.	Yes	Single	Numeric Code	01=Yes 02=No	
NC2	Other Federal Funds	Indication of other federal funds used for OAA services. (multiple selection)	Yes	Multiple	Numeric Code (multiple select)	01=Medicaid 02=Medicaid Waiver 03=SSBG 04=USDA 05=DOT 98=Other 99=None	<ul style="list-style-type: none"> If 99=None is selected; other codes are not available.
NC3	Other Federal Funds Comments	Comments on Other Federal Funds, if appropriate.	No	Single	Alphanumeric String	N/A (not a coded element)	<ul style="list-style-type: none"> Maximum length of 3,400 characters (about 500 words).

2.1 Network Staff and Volunteers Subcomponent

The Network subcomponent includes data regarding staffing and volunteers and the state and Area Agency on Aging level of the network.

Element Number	Data Element	Element Description	Required	Quantifier	Type	Codes and Values	Business Rules/Notes
SV1	SUA Staff (paid)-Full-time	Number of paid full-time (average 35+ hours a week) at SUA as of September 30 of reporting year. Ombudsman staff are not included in count.	Yes	Single	Numeric (integer)	N/A (not a coded element)	

Element Number	Data Element	Element Description	Required	Quantifier	Type	Codes and Values	Business Rules/Notes
SV2	SUA Staff (paid)-Part-time	Number of paid part-time (average less than 35 hours a week) at SUA as of September 30 of reporting year. Ombudsman staff are not included in count.	Yes	Single	Numeric (integer)	N/A (not a coded element)	
SV3	AAA Staff (paid)-Full-time	Number of paid full-time (average 35+ hours a week) at AAA as of September 30 of reporting year. Ombudsman staff are not included in count.	Yes (conditional)	Single	Numeric (integer)	N/A (not a coded element)	<ul style="list-style-type: none"> • Not required if single PSA
SV4	AAA Staff (paid)-Part-time	Number of paid part-time (average less than 35 hours a week) at AAA as of September 30 of reporting year. Ombudsman staff are not included in count.	Yes (conditional)	Single	Numeric (integer)	N/A (not a coded element)	<ul style="list-style-type: none"> • Not required if single PSA
SV5	SUA/AAA Staff Comments	Comments on SUA and AAA staffing information, if appropriate.	No	Single	Alphanumeric String	N/A (not a coded element)	<ul style="list-style-type: none"> • Maximum length of 3,400 characters (about 500 words).
SV6	AAA Volunteers – Persons	Number of volunteers (unduplicated) at all AAAs.	Yes	Single	Numeric (integer)	N/A (not a coded element)	
SV7	AAA Volunteers - Total hours	Number of volunteer hours provided to all AAAs. Rounded to nearest integer.	Yes	Single	Numeric (integer)	N/A (not a coded element)	
NC9	Volunteer Comments	Comments on volunteer information, if appropriate.	No	Single	Alphanumeric String	N/A (not a coded element)	<ul style="list-style-type: none"> • Maximum length of 3,400 characters (about 500 words).

2.2 Network Service Providers Subcomponent

The Network subcomponent includes data regarding local service providers in the state network.

Element Number	Data Element	Element Description	Required	Quantifier	Type	Codes and Values	Business Rules/Notes
SP1	Providers (all services)	Total number of service providers for any and all aging services (unduplicated).	Yes	Single	Numeric (integer)	N/A (not a coded element)	
SP2	Providers (Title III-B/C/D only)	Total number of service providers for Title III-B/C/D services only (unduplicated).	Yes	Single	Numeric (integer)	N/A (not a coded element)	
SP3	Providers (Title III-E only)	Total number of service providers for Title III-E only.	Yes	Single	Numeric (integer)	N/A (not a coded element)	
SP4	Providers (Home Delivered Meals)	Total number of service providers for Home Delivered Meals.	Yes	Single	Numeric (integer)	N/A (not a coded element)	
SP5	Providers (Congregate Meals)	Total number of service providers for Congregate Meals.	Yes	Single	Numeric (integer)	N/A (not a coded element)	
SP6	Providers (Information and Assistance)	Total number of service providers for Information and Assistance.	Yes	Single	Numeric (integer)	N/A (not a coded element)	
SP7	Providers Comments	Comments on service providers, if appropriate.	No	Single	Alphanumeric String	N/A (not a coded element)	<ul style="list-style-type: none"> • Maximum length of 3,400 characters (about 500 words).

2.3 Network Senior Centers and Focal Points Subcomponent

The Network subcomponent includes data regarding local service providers in the state network.

Element Number	Data Element	Element Description	Required	Quantifier	Type	Codes and Values	Business Rules/Notes
SF1	Senior Centers	Total Number of Senior Centers in the State regardless of funding.	Yes	Single	Numeric (integer)	N/A (not a coded element)	
SF2	Senior Centers-OAA Funds	Total Number of Senior Centers in the State that received OAA Funds.	Yes	Single	Numeric (integer)	N/A (not a coded element)	
SF3	Senior Centers Comments	Comments on Senior Centers, if appropriate.	No	Single	Alphanumeric String	N/A (not a coded element)	<ul style="list-style-type: none"> Maximum length of 3,400 characters (about 500 words).

2.4 Self-Direction (Title III B/E) Subcomponent

The Self-Direction (Title III B/E) Subcomponent includes data regarding the number of consumers and caregivers that used the Self-Directed approach for services and expenditure data. Self-Direction is an approach to service delivery. Actual service information will be collected within the appropriate service area.

- All data elements are required and single quantifier.

Element Number	Data Element	Element Description	Type
SD1	Persons Served – Consumer	Total Unduplicated Count of Older Adult Served Through Title III B Services supported by Self-Directed Care.	Numeric (integer)
SD2	Title III Expenditure-Consumer	Total outlays/payments made by the SUA and/or AAA's using OAA federal funds to provide Title III B services through Self-Directed Care.	Numeric (2 decimal)
SD3	Other - State Expenditure-Consumer	Outlays/payments made by the SUA and/or AAA's using state funds to provide Title III B services through Self-Directed Care.	Numeric (2 decimal)

Element Number	Data Element	Element Description	Type
SD4	Other - Non-State Expenditure-Consumer	Outlays/payments made by the SUA and/or AAA's not using OAA or state funds to provide Title III B services through Self-Directed Care.	Numeric (2 decimal)
SD5	Program Income Received-Consumer	Gross income received by the grantee and all sub grantees such as voluntary contributions or income earned only as a result of the grant project during the grant period.	Numeric (2 decimal)
SD6	Persons Served -Caregiver Older Adult	Total Unduplicated Count of Caregivers of Older Adults served Through Title III-E Services Supported by Self-Directed Care.	Numeric (integer)
SD7	Title III Expenditure-Caregiver Older Adult	Total outlays/payments made by the SUA and/or AAA's using OAA federal funds to provide Title III E services for Caregivers of Older Adults through Self-Directed Care.	Numeric (2 decimal)
SD8	Other - State Expenditure-Caregiver Older Adult	Outlays/payments made by the SUA and/or AAA's using state funds to provide Title III E services for Caregivers of Older Adults through Self-Directed Care.	Numeric (2 decimal)
SD9	Other - Non-State Expenditure-Caregiver Older Adult	Outlays/payments made by the SUA and/or AAA's not using OAA or state funds to provide Title III E services for Caregivers of Older Adults through Self-Directed Care.	Numeric (2 decimal)
SD10	Program Income Received-Caregiver Older Adult	Gross income received by the grantee and all sub grantees such as voluntary contributions or income earned only as a result of the grant project during the grant period.	Numeric (2 decimal)
SD11	Persons Served -Caregiver Child	Total Unduplicated Count of Caregivers of Children and Disabled Adults served Through Title III-E Services Supported by Self-Directed Care.	Numeric (integer)

Element Number	Data Element	Element Description	Type
SD12	Title III Expenditure-Caregiver Child	Total outlays/payments made by the SUA and/or AAA's using OAA federal funds to provide Title III E services for Caregivers of Children and Disabled Adults through Self-Directed Care.	Numeric (2 decimal)
SD13	Other - State Expenditure-Caregiver Child	Outlays/payments made by the SUA and/or AAA's using state funds to provide Title III E services for Caregivers of Children and Disabled Adults through Self-Directed Care.	Numeric (2 decimal)
SD14	Other - Non-State Expenditure-Caregiver Child	Outlays/payments made by the SUA and/or AAA's not using OAA or state funds to provide Title III E services for Caregivers of Children and Disabled Adults through Self-Directed Care.	Numeric (2 decimal)
SD15	Program Income Received-Caregiver Child	Gross income received by the grantee and all sub grantees such as voluntary contributions or income earned only as a result of the grant project during the grant period.	Numeric (2 decimal)

2.5 Respite Voucher (Title III E) Subcomponent

The Respite Voucher (Title III E) Subcomponent includes data regarding the number of caregivers that used the Respite Vouchers for respite services and expenditure data. The use of vouchers is an approach to service delivery. Actual respite service information will be collected within the appropriate respite service area.

- All data elements are required and single quantifier.

Element Number	Data Element	Element Description	Type
RV1	Persons Served -Caregiver Older Adult	Total Unduplicated Count of Caregivers of Older Adults served Through Title III E Respite Services with a respite voucher.	Numeric (integer)
RV2	Title III Expenditure-Caregiver Older Adult	Total outlays/payments made by the SUA and/or AAA's using OAA federal funds to provide respite vouchers for Title III E Respite Services for Caregivers of Older Adults.	Numeric (2 decimal)

Element Number	Data Element	Element Description	Type
RV3	Other - State Expenditure-Caregiver Older Adult	Outlays/payments made by the SUA and/or AAA's using state funds to provide respite vouchers for Title III E Respite Services for Caregivers of Older Adults.	Numeric (2 decimal)
RV4	Other - Non-State Expenditure-Caregiver Older Adult	Outlays/payments made by the SUA and/or AAA's not using OAA or state funds to provide respite vouchers for Title III E Respite Services for Caregivers of Older Adults.	Numeric (2 decimal)
RV5	Program Income Received-Caregiver Older Adult	Gross income received by the grantee and all sub grantees such as voluntary contributions or income earned only as a result of the grant project during the grant period.	Numeric (2 decimal)
RV6	Persons Served -Caregiver Child	Total Unduplicated Count of Caregivers of Children and Disabled Adults served Through Title III-E Services Supported by Self-Directed Care.	Numeric (integer)
RV7	Title III Expenditure-Caregiver Child	Total outlays/payments made by the SUA and/or AAA's using OAA federal funds to provide respite vouchers for Title III E Respite Services for Caregivers of Children and Disabled Adults.	Numeric (2 decimal)
RV8	Other - State Expenditure-Caregiver Child	Outlays/payments made by the SUA and/or AAA's using state funds to provide respite vouchers for Title III E Respite Services for Caregivers of Children and Disabled Adults.	Numeric (2 decimal)
RV9	Other - Non-State Expenditure-Caregiver Child	Outlays/payments made by the SUA and/or AAA's not using OAA or state funds to provide respite vouchers for Title III E Respite Services for Caregivers of Children and Disabled Adults.	Numeric (2 decimal)
RV10	Program Income Received-Caregiver Child	Gross income received by the grantee and all sub grantees such as voluntary contributions or income earned only as a result of the grant project during the grant period.	Numeric (2 decimal)

2.6 Network Business Acumen Subcomponent

The Business Acumen Subcomponent includes data regarding the extent that the state network has entered into contractual relationships with entities such as Accountable Care Organizations (ACOs), Health Insurers and others to provide Long Term Services and Supports (LTSS) or services related to the provision of LTSS.

Element Number	Data Element	Element Description	Required	Quantifier	Type	Codes and Values	Business Rules/Notes
BA1	Contracts held by AAAs	Total number of service contracts held by all AAAs.	Yes	Single	Numeric (integer)	N/A (not a coded element)	
BA2	Contracts held by AAAs Comments	Comments on contracts held by AAAs, if appropriate.	No	Single	Alphanumeric String	N/A (not a coded element)	<ul style="list-style-type: none"> Maximum length of 3,400 characters (about 500 words).

3. Service Component

The Service component includes data regarding the duplicated consumers across all services.

- All data elements are required and single quantifier.
- All data elements are Numeric (integer) and not a coded element.

Element Number	Data Element	Element Description	Business Rules/Notes
SC1	Consumers Served Registered	Unduplicated Count of Consumers Served For Registered Services Supported by the OAA Title III B/C/D	<ul style="list-style-type: none"> Number does not include caregivers served
SC2	Consumers Served Unregistered	Estimated Unduplicated Count of Consumers Served For Unregistered Services Supported by the OAA Title III B/C/D	<ul style="list-style-type: none"> Number does not include caregivers served
SC3	Total Consumers Served	Total Estimated Unduplicated Count of Consumers Served Through Services Supported by OAA Title III B/C/D	<ul style="list-style-type: none"> Number does not include caregivers served

Element Number	Data Element	Element Description	Business Rules/Notes
SC4	Caregivers Served Registered	Unduplicated Count of Caregivers Served For Registered Services Supported by the OAA Title III E	
SC5	Caregivers Served Unregistered	Estimated Unduplicated Count of Caregivers Served For Unregistered Services Supported by the OAA Title III E	
SC6	Total Caregivers Served	Total Estimated Unduplicated Count of Caregivers Served Through Services Supported by OAA Title III E	

3.1 Consumer Demographics/Characteristics for Select Services (Title III B/C/D) Subcomponent

The Consumer Demographics/Characteristics for Select Services (Title III B/C/D) Subcomponent includes data regarding specific demographics and characteristics of consumers.

- All data elements are required and single quantifier.
- All data elements are Numeric (integer) and not a coded element.

Element Number	Data Element	Element Description	Services
CD1	Total Consumers - Total	Total Count of Consumers that received service.	<ul style="list-style-type: none"> • All registered services - unduplicated • Selected services with ADL/IADL - unduplicated • Each Selected service separately • Non- Registered service: Legal Assistance • Nutrition Education (non-selected service; estimated audience size)

Element Number	Data Element	Element Description	Services
CD2	Age - Total <ul style="list-style-type: none"> • <60 • 60-64 • 65-74 • 75-84 • 85+ • Age Missing 	Total Count of Consumers by age group that received service.	<ul style="list-style-type: none"> • All registered services - unduplicated • Registered services with ADL/IADL - unduplicated • Each registered service separately • Non- Registered service: Legal Assistance
CD3	Gender Identity - Total <ul style="list-style-type: none"> • Female • Male • Transgender • Gender Missing 	Total Count of Consumers by gender identity that received service.	<ul style="list-style-type: none"> • All registered services - unduplicated • Registered services with ADL/IADL - unduplicated • Each registered service separately • Non- Registered service: Legal Assistance
CD4	Sexual Orientation – Total <ul style="list-style-type: none"> • Gay • Lesbian • Straight • Bisexual • Something else • Sexual Orientation Missing 	Total Count of Consumers by sexual orientation that received service.	<ul style="list-style-type: none"> • All registered services - unduplicated • Registered services with ADL/IADL - unduplicated • Each registered service separately • Non- Registered service: Legal Assistance
CD5	Rural Status - Total <ul style="list-style-type: none"> • Rural • Non-rural • Rural Status Missing 	Total Count of Consumers by rural status that received service.	<ul style="list-style-type: none"> • All registered services - unduplicated • Registered services with ADL/IADL - unduplicated • Each registered service separately • Non- Registered service: Legal Assistance
CD6	Poverty Status - Total <ul style="list-style-type: none"> • At or Below Poverty • Above Poverty • Poverty Status Missing 	Total Count of Consumers by poverty status that received service.	<ul style="list-style-type: none"> • All registered services - unduplicated • Registered services with ADL/IADL – unduplicated • Each registered service separately • Non- Registered service: Legal Assistance
CD7	Living Status - Total <ul style="list-style-type: none"> • Lives Alone • Lives with Others • Living Status Missing 	Total Count of Consumers by living status that received service.	<ul style="list-style-type: none"> • All registered services - unduplicated • Registered services with ADL/IADL - unduplicated • Each registered service separately

Element Number	Data Element	Element Description	Services
CD8	Ethnicity - Total <ul style="list-style-type: none"> • Hispanic or Latino • Not Hispanic or Latino • Ethnicity Missing 	Total Count of Consumers by ethnicity that received service.	<ul style="list-style-type: none"> • All registered services - unduplicated • Registered services with ADL/IADL - unduplicated • Each registered service separately • Non- Registered service: Legal Assistance
CD9	Race - Total <ul style="list-style-type: none"> • American Indian or Alaska Native • Asian • Black or African American • Native Hawaiian or Other Pacific Islander • White • Race Missing 	Total Count of Consumers by race that received service. Race is duplicated person count -- NOT unduplicated. Multi-racial Consumers are counted in each race indicated.	<ul style="list-style-type: none"> • All registered services - unduplicated • Registered services with ADL/IADL - unduplicated • Each registered service separately • Non- Registered service: Legal Assistance
CD10	Minority Status - Total <ul style="list-style-type: none"> • Minority • Not Minority • Minority Status Missing 	Total Count of Consumers by minority status that received service. CDC Source: Racial and ethnic minority populations are defined as: Asian American, Black or African American, Hispanic or Latino, Native Hawaiian and Other Pacific Islander, American Indian and Alaska Native.	<ul style="list-style-type: none"> • All registered services - unduplicated • Registered services with ADL/IADL - unduplicated • Each registered service separately • Non- Registered service: Legal Assistance
CD11	ADL Score - Total <ul style="list-style-type: none"> • 0 • 1-2 • 3+ • ADL Missing 	Total Count of Consumers by ADL score that received service.	<ul style="list-style-type: none"> • Registered services with ADL/IADL - unduplicated • Each registered service separately
CD12	IADL Score - Total <ul style="list-style-type: none"> • 0 • 1-2 • 3+ • IADL Missing 	Total Count of Consumers by IADL score that received service.	<ul style="list-style-type: none"> • Registered services with ADL/IADL - unduplicated • Each registered service separately

Element Number	Data Element	Element Description	Services
CD13	Nutrition Risk Score - Total <ul style="list-style-type: none"> • 0-2 • 3-5 • 6+ • Score Missing 	Total Count of Consumers by Nutrition Risk Score that received service.	<ul style="list-style-type: none"> • All registered services - unduplicated • Registered services with ADL/IADL - unduplicated • Each registered service separately
CD14	Total Consumers - At or Below Poverty	Count of Consumers at or below poverty that received service.	<ul style="list-style-type: none"> • All registered services - unduplicated • Registered services with ADL/IADL - unduplicated • Each registered service separately
CD15	Age - At or Below Poverty <ul style="list-style-type: none"> • <60 • 60-64 • 65-74 • 75-84 • 85+ • Age Missing 	Count of Consumers at or below poverty by age group that received service.	<ul style="list-style-type: none"> • All registered services - unduplicated • Registered services with ADL/IADL - unduplicated • Each registered service separately • Non- Registered service: Legal Assistance
CD16	Gender Identity - At or Below Poverty <ul style="list-style-type: none"> • Female • Male • Transgender • Gender Missing 	Count of Consumers at or below poverty by gender identity that received service.	<ul style="list-style-type: none"> • All registered services - unduplicated • Registered services with ADL/IADL - unduplicated • Each registered service separately • Non- Registered service: Legal Assistance
CD17	Sexual Orientation - At or Below Poverty <ul style="list-style-type: none"> • Gay • Lesbian • Straight • Bisexual • Something else • Sexual Orientation Missing 	Total Count of Consumers at or below poverty by sexual orientation that received service.	<ul style="list-style-type: none"> • All registered services - unduplicated • Registered services with ADL/IADL - unduplicated • Each registered service separately • Non- Registered service: Legal Assistance
CD18	Rural Status - At or Below Poverty <ul style="list-style-type: none"> • Rural • Non-rural • Rural Status Missing 	Count of Consumers at or below poverty by rural status that received service.	<ul style="list-style-type: none"> • All registered services - unduplicated • Registered services with ADL/IADL - unduplicated • Each registered service separately • Non- Registered service: Legal Assistance

Element Number	Data Element	Element Description	Services
CD19	Living Status - At or Below Poverty <ul style="list-style-type: none"> • Lives Alone • Lives with Others • Living Status Missing 	Count of Consumers at or below poverty by living status that received service.	<ul style="list-style-type: none"> • All registered services - unduplicated • Registered services with ADL/IADL - unduplicated • Each registered service separately
CD20	Ethnicity - At or Below Poverty <ul style="list-style-type: none"> • Hispanic or Latino • Not Hispanic or Latino • Ethnicity Missing 	Count of Consumers at or below poverty by ethnicity that received service.	<ul style="list-style-type: none"> • All registered services - unduplicated • Registered services with ADL/IADL - unduplicated • Each registered service separately • Non- Registered service: Legal Assistance
CD21	Race - At or Below Poverty <ul style="list-style-type: none"> • American Indian or Alaska Native • Asian • Black or African American • Native Hawaiian or Other Pacific Islander • White • Race Missing 	Count of Consumers at or below poverty by race that received service. Race is duplicated person count -- NOT unduplicated. Multi-racial Consumers are counted in each race indicated.	<ul style="list-style-type: none"> • All registered services - unduplicated • Registered services with ADL/IADL - unduplicated • Each registered service separately • Non- Registered service: Legal Assistance
CD22	Minority Status - At or Below Poverty <ul style="list-style-type: none"> • Minority • Not Minority • Minority Status Missing 	Count of Consumers at or below poverty by minority status that received service. CDC Source: Racial and ethnic minority populations are defined as: Asian American, Black or African American, Hispanic or Latino, Native Hawaiian and Other Pacific Islander, American Indian and Alaska Native.	<ul style="list-style-type: none"> • All registered services - unduplicated • Registered services with ADL/IADL - unduplicated • Each registered service separately • Non- Registered service: Legal Assistance
CD23	ADL Score - At or Below Poverty <ul style="list-style-type: none"> • 0 • 1-2 • 3+ • ADL Missing 	Count of Consumers at or below poverty by ADL score that received service.	<ul style="list-style-type: none"> • Registered services with ADL/IADL - unduplicated • Each registered service separately

Element Number	Data Element	Element Description	Services
CD24	IADL Score - At or Below Poverty <ul style="list-style-type: none"> • 0 • 1-2 • 3+ • IADL Missing 	Count of Consumers at or below poverty by IADL score that received service.	<ul style="list-style-type: none"> • Registered services with ADL/IADL - unduplicated • Each registered service separately
CD25	Nutrition Risk Score - At or Below Poverty <ul style="list-style-type: none"> • 0-2 • 3-5 • 6+ • Score Missing 	Count of Consumers at or below poverty by Nutrition Risk Score that received service.	<ul style="list-style-type: none"> • Congregate Meals • Home Delivered Meals • Nutrition Counseling • Combine the 3 services- unduplicated
CD26	Poverty Status - Minority <ul style="list-style-type: none"> • At or Below Poverty • Above Poverty • Poverty Status Missing 	Count of minority Consumers by poverty status that received service.	<ul style="list-style-type: none"> • Registered services with ADL/IADL - unduplicated • Each registered service separately • Non- Registered service: Legal Assistance
CD27	Total Consumers - ADL 3+	Count of Consumers ADL score of 3 and above that received service.	<ul style="list-style-type: none"> • Registered services with ADL/IADL - unduplicated • Each registered service separately
CD28	Age - ADL 3+ <ul style="list-style-type: none"> • <60 • 60-64 • 65-74 • 75-84 • 85+ • Age Missing 	Count of Consumers ADL score of 3 and above by age group that received service.	<ul style="list-style-type: none"> • Registered services with ADL/IADL - unduplicated • Each registered service separately
CD29	Gender Identity - ADL 3+ <ul style="list-style-type: none"> • Female • Male • Transgender • Gender Missing 	Count of Consumers ADL score of 3 and above by gender identity that received service.	<ul style="list-style-type: none"> • Registered services with ADL/IADL - unduplicated • Each registered service separately

Element Number	Data Element	Element Description	Services
CD30	Sexual Orientation – ADL 3+ <ul style="list-style-type: none"> • Gay • Lesbian • Straight • Bisexual • Something else Sexual Orientation Missing	Count of Consumers ADL score of 3 and above by sexual orientation that received service.	<ul style="list-style-type: none"> • Registered services with ADL/IADL - unduplicated • Each registered service separately
CD31	Rural Status - ADL 3+ <ul style="list-style-type: none"> • Rural • Non-rural Rural Status Missing	Count of Consumers ADL score of 3 and above by rural status that received service.	<ul style="list-style-type: none"> • Registered services with ADL/IADL - unduplicated • Each registered service separately
CD32	Poverty Status - ADL 3+ <ul style="list-style-type: none"> • At or Below Poverty • Above Poverty Poverty Status Missing	Count of Consumers ADL score of 3 and above by poverty status that received service.	<ul style="list-style-type: none"> • Registered services with ADL/IADL - unduplicated • Each registered service separately
CD33	Living Status - ADL 3+ <ul style="list-style-type: none"> • Lives Alone • Lives with Others Living Status Missing	Count of Consumers ADL score of 3 and above by living status that received service.	<ul style="list-style-type: none"> • Registered services with ADL/IADL - unduplicated • Each registered service separately
CD34	Ethnicity - ADL 3+ <ul style="list-style-type: none"> • Hispanic or Latino • Not Hispanic or Latino Ethnicity Missing	Count of Consumers ADL score of 3 and above by ethnicity that received service.	<ul style="list-style-type: none"> • Registered services with ADL/IADL - unduplicated • Each registered service separately
CD35	Race - ADL 3+ <ul style="list-style-type: none"> • American Indian or Alaska Native • Asian • Black or African American • Native Hawaiian or Other Pacific Islander • White Race Missing	Count of Consumers ADL score of 3 and above by race that received service. Race is duplicated person count -- NOT unduplicated. Multi-racial Consumers are counted in each race indicated.	<ul style="list-style-type: none"> • Registered services with ADL/IADL - unduplicated • Each registered service separately

Element Number	Data Element	Element Description	Services
CD36	Minority Status - ADL 3+ <ul style="list-style-type: none"> • Minority • Not Minority • Minority Status Missing 	Count of Consumers ADL score of 3 and above by minority status that received service. CDC Source: Racial and ethnic minority populations are defined as: Asian American, Black or African American, Hispanic or Latino, Native Hawaiian and Other Pacific Islander, American Indian and Alaska Native.	<ul style="list-style-type: none"> • Registered services with ADL/IADL - unduplicated • Each registered service separately
CD37	Nutrition Risk Score - ADL 3+ <ul style="list-style-type: none"> • 0-2 • 3-5 • 6+ • Score Missing 	Count of Consumers ADL score of 3 and above by Nutrition Risk Score that received service.	<ul style="list-style-type: none"> • Home Delivered Meals
CD38	Total Consumers - IADL 3+	Count of Consumers IADL score of 3 and above that received service.	<ul style="list-style-type: none"> • Registered services with ADL/IADL - unduplicated • Each registered service separately
CD39	Age - IADL 3+ <ul style="list-style-type: none"> • <60 • 60-64 • 65-74 • 75-84 • 85+ • Age Missing 	Count of Consumers IADL score of 3 and above by age group that received service.	<ul style="list-style-type: none"> • Registered services with ADL/IADL - unduplicated • Each registered service separately
CD40	Gender Identity - IADL 3+ <ul style="list-style-type: none"> • Female • Male • Transgender • Gender Missing 	Count of Consumers IADL score of 3 and above by gender identity that received service.	<ul style="list-style-type: none"> • Registered services with ADL/IADL - unduplicated • Each registered service separately

Element Number	Data Element	Element Description	Services
CD41	Sexual Orientation – IADL 3+ <ul style="list-style-type: none"> • Gay • Lesbian • Straight • Bisexual • Something else • Sexual Orientation Missing 	Count of Consumers IADL score of 3 and above by sexual orientation that received service.	<ul style="list-style-type: none"> • Registered services with ADL/IADL - unduplicated • Each registered service separately
CD42	Rural Status - IADL 3+ <ul style="list-style-type: none"> • Rural • Non-rural • Rural Status Missing 	Count of Consumers IADL score of 3 and above by rural status that received service.	<ul style="list-style-type: none"> • Registered services with ADL/IADL - unduplicated • Each registered service separately
CD43	Poverty Status - IADL 3+ <ul style="list-style-type: none"> • At or Below Poverty • Above Poverty • Poverty Status Missing 	Count of Consumers IADL score of 3 and above by poverty status that received service.	<ul style="list-style-type: none"> • Registered services with ADL/IADL - unduplicated • Each registered service separately
CD44	Living Status - IADL 3+ <ul style="list-style-type: none"> • Lives Alone • Lives with Others • Living Status Missing 	Count of Consumers IADL score of 3 and above by living status that received service.	<ul style="list-style-type: none"> • Registered services with ADL/IADL - unduplicated • Each registered service separately
CD45	Ethnicity - IADL 3+ <ul style="list-style-type: none"> • Hispanic or Latino • Not Hispanic or Latino • Ethnicity Missing 	Count of Consumers IADL score of 3 and above by ethnicity that received service.	<ul style="list-style-type: none"> • Registered services with ADL/IADL - unduplicated • Each registered service separately
CD46	Race - IADL 3+ <ul style="list-style-type: none"> • American Indian or Alaska Native • Asian • Black or African American • Native Hawaiian or Other Pacific Islander • White • Race Missing 	Count of Consumers IADL score of 3 and above by race that received service. Race is duplicated person count -- NOT unduplicated. Multi-racial Consumers are counted in each race indicated.	<ul style="list-style-type: none"> • Registered services with ADL/IADL - unduplicated • Each registered service separately

Element Number	Data Element	Element Description	Services
CD47	Minority Status - IADL 3+ <ul style="list-style-type: none"> • Minority • Not Minority • Minority Status Missing 	Count of Consumers IADL score of 3 and above by minority status that received service. CDC Source: Racial and ethnic minority populations are defined as: Asian American, Black or African American, Hispanic or Latino, Native Hawaiian and Other Pacific Islander, American Indian and Alaska Native.	<ul style="list-style-type: none"> • Registered services with ADL/IADL - unduplicated • Each registered service separately
CD48	Nutrition Risk Score - IADL 3+ <ul style="list-style-type: none"> • 0-2 • 3-5 • 6+ • Score Missing 	Count of Consumers IADL score of 3 and above by Nutrition Risk Score that received service.	<ul style="list-style-type: none"> • Home Delivered Meals

3.2 Caregiver of Older Adults for Select Services (Title III E) Subcomponent

The Caregiver of Older Adults Demographics/Characteristics for Selected Services (Title III E) Subcomponent includes data regarding specific demographics and characteristics of caregivers of Older Adults.

- All data elements are required and single quantifier.
- All data elements are Numeric (integer) and not a coded element.

Element Number	Data Element	Element Description	Services
CG1	Total Caregiver of Older Adults - Total	Total Count of Caregivers of Older Adults that received service.	<ul style="list-style-type: none"> • Registered services - unduplicated • Each registered service separately • Assistance – Information & Referral (non-registered service; estimated unduplicated) • Information Services (non-registered service; estimated audience size)

Element Number	Data Element	Element Description	Services
CG2	Age - Total <ul style="list-style-type: none"> • 18-49 • 50-59 • 60-64 • 65-74 • 75-84 • 85+ • Age Missing 	Total Count of Caregivers of Older Adults by age that received service.	<ul style="list-style-type: none"> • Registered services - unduplicated • Each registered service separately
CG3	Gender Identity - Total <ul style="list-style-type: none"> • Female • Male • Transgender • Gender Missing 	Total Count of Caregivers of Older Adults by gender identity that received service.	<ul style="list-style-type: none"> • Registered services - unduplicated • Each registered service separately
CG4	Sexual Orientation – Total <ul style="list-style-type: none"> • Gay • Lesbian • Straight • Bisexual • Something else Sexual Orientation Missing 	Total Count of Caregivers by sexual orientation that received service.	<ul style="list-style-type: none"> • Registered services - unduplicated • Each registered service separately
CG5	Rural Status - Total <ul style="list-style-type: none"> • Rural • Non-rural • Rural Status Missing 	Total Count of Caregivers of Older Adults by rural status that received service.	<ul style="list-style-type: none"> • Registered services - unduplicated • Each registered service separately
CG6	Poverty Status - Total <ul style="list-style-type: none"> • At or Below Poverty • Above Poverty • Poverty Status Missing 	Total Caregivers of Older Adults by poverty status that received service.	<ul style="list-style-type: none"> • Registered services - unduplicated • Each registered service separately
CG7	Ethnicity - Total <ul style="list-style-type: none"> • Hispanic or Latino • Not Hispanic or Latino • Ethnicity Missing 	Total Caregivers of Older Adults by ethnicity that received service.	<ul style="list-style-type: none"> • Registered services - unduplicated • Each registered service separately

Element Number	Data Element	Element Description	Services
CG8	Race - Total <ul style="list-style-type: none"> American Indian or Alaska Native Asian Black or African American Native Hawaiian or Other Pacific Islander White Race Missing 	Total Caregivers of Older Adults by race that received service. Race is duplicated caregiver count -- NOT unduplicated. Multi-racial caregivers are counted in each race indicated.	<ul style="list-style-type: none"> Registered services - unduplicated Each registered service separately
CG9	Minority Status - Total <ul style="list-style-type: none"> Minority Not Minority Minority Status Missing 	Total Caregivers of Older Adults by minority status that received service. CDC Source: Racial and ethnic minority populations are defined as: Asian American, Black or African American, Hispanic or Latino, Native Hawaiian and Other Pacific Islander, American Indian and Alaska Native.	<ul style="list-style-type: none"> Registered services - unduplicated Each registered service separately
CG10	Relationship - Total <ul style="list-style-type: none"> Grandparents Other Older Relative Older Non-Relative Relationship Missing 	Total Caregivers of Older Adults by relationship that received service.	<ul style="list-style-type: none"> Registered services - unduplicated Each registered service separately
CG11	Total Caregivers of Older Adults - At or Below Poverty	Count of Caregivers of Older Adults at or below poverty that received service.	<ul style="list-style-type: none"> Registered services - unduplicated Each registered service separately
CG12	Age - At or Below Poverty <ul style="list-style-type: none"> 18-49 50-59 60-64 65-74 75-84 85+ Age Missing 	Count of Caregivers of Older Adults at or below poverty by age group that received service.	<ul style="list-style-type: none"> Registered services - unduplicated Each registered service separately

Element Number	Data Element	Element Description	Services
CG13	Gender Identity - At or Below Poverty <ul style="list-style-type: none"> • Female • Male • Transgender • Gender Missing 	Count of Caregivers of Older Adults at or below poverty by gender identity that received service.	<ul style="list-style-type: none"> • Registered services _ unduplicated • Each registered service separately
CG14	Sexual Orientation – At or Below Poverty <ul style="list-style-type: none"> • Gay • Lesbian • Straight • Bisexual • Something else Sexual Orientation Missing 	Count of Caregivers of Older Adults at or below poverty by sexual orientation that received service.	<ul style="list-style-type: none"> • Registered services _ unduplicated • Each registered service separately
CG15	Rural Status - At or Below Poverty <ul style="list-style-type: none"> • Rural • Non-rural • Rural Status Missing 	Count of Caregivers of Older Adults at or below poverty by rural status that received service.	<ul style="list-style-type: none"> • Registered services _ unduplicated • Each registered service separately
CG16	Ethnicity - At or Below Poverty <ul style="list-style-type: none"> • Hispanic or Latino • Not Hispanic or Latino • Ethnicity Missing 	Count of Caregivers of Older Adults at or below poverty by ethnicity that received service.	<ul style="list-style-type: none"> • Registered services _ unduplicated • Each registered service separately
CG17	Race - At or Below Poverty <ul style="list-style-type: none"> • American Indian or Alaska Native • Asian • Black or African American • Native Hawaiian or Other Pacific Islander • White • Race Missing 	Count of Caregivers of Older Adults at or below poverty by race that received service. Race is duplicated caregiver count -- NOT unduplicated. Multi-racial caregivers are counted in each race indicated.	<ul style="list-style-type: none"> • Registered services _ unduplicated • Each registered service separately

Element Number	Data Element	Element Description	Services
CG18	Minority Status - At or Below Poverty <ul style="list-style-type: none"> • Minority • Not Minority • Minority Status Missing 	Count of Caregivers of Older Adults at or below poverty by minority status that received service. CDC Source: Racial and ethnic minority populations are defined as: Asian American, Black or African American, Hispanic or Latino, Native Hawaiian and Other Pacific Islander, American Indian and Alaska Native.	<ul style="list-style-type: none"> • Registered services _ unduplicated • Each registered service separately
CG19	Relationship - At or Below Poverty <ul style="list-style-type: none"> • Husband • Wife • Domestic partner, including civil union • Son/Son-in-Law • Daughter/Daughter-in-Law • Sibling • Other Relative • Non-Relative • Relationship Missing 	Count of Caregivers of Older Adults at or below poverty by relationship that received service.	<ul style="list-style-type: none"> • Registered services _ unduplicated • Each registered service separately
CG20	Poverty Status - Minority <ul style="list-style-type: none"> • At or Below Poverty • Above Poverty • Poverty Status Missing 	Count of minority Caregivers of Older Adults by poverty status that received service.	<ul style="list-style-type: none"> • Registered services _ unduplicated • Each registered service separately

3.3 Caregiver of Children/Adults with Disabilities for Select Services (Title III E) Subcomponent

The Caregiver of Children and Adults between the age of 18 and 59 with Disabilities Demographics/Characteristics for Select Services (Title III E) Subcomponent includes data regarding specific demographics and characteristics of caregivers of Children and Adults with Disabilities.

- All data elements are required and single quantifier.
- All data elements are Numeric (integer) and not a coded element.

Element Number	Data Element	Element Description	Services
CC1	Total Caregiver of Children and Adults with Disabilities - Total	Total Count of Caregivers of Children and Adults with Disabilities that received service.	<ul style="list-style-type: none"> • Registered services - unduplicated • Each registered service separately • Assistance – Information & Referral (non-registered service; estimated unduplicated) • Information Services (non-registered service; estimated audience size)
CC2	Age - Total <ul style="list-style-type: none"> • 55-59 • 60-64 • 65-74 • 75-84 • 85+ • Age Missing 	Total Count of Caregivers of Children and Adults with Disabilities by age that received service.	<ul style="list-style-type: none"> • Registered services - unduplicated • Each registered service separately
CC3	Gender Identity - Total <ul style="list-style-type: none"> • Female • Male • Transgender • Gender Missing 	Total Count of Caregivers of Children and Adults with Disabilities by gender identity that received service.	<ul style="list-style-type: none"> • Registered services - unduplicated • Each registered service separately
CC4	Sexual Orientation – Total <ul style="list-style-type: none"> • Gay • Lesbian • Straight • Bisexual • Something else Sexual Orientation Missing 	Total Count of Caregivers by sexual orientation that received service.	<ul style="list-style-type: none"> • Registered services - unduplicated • Each registered service separately

Element Number	Data Element	Element Description	Services
CC5	Rural Status - Total <ul style="list-style-type: none"> • Rural • Non-rural • Rural Status Missing 	Total Count of Caregivers of Children and Adults with Disabilities by rural status that received service.	<ul style="list-style-type: none"> • Registered services - unduplicated • Each registered service separately
CC6	Poverty Status - Total <ul style="list-style-type: none"> • At or Below Poverty • Above Poverty • Poverty Status Missing 	Total Caregivers of Children and Adults with Disabilities by poverty status that received service.	<ul style="list-style-type: none"> • Registered services - unduplicated • Each registered service separately
CC7	Ethnicity - Total <ul style="list-style-type: none"> • Hispanic or Latino • Not Hispanic or Latino • Ethnicity Missing 	Total Caregivers of Children and Adults with Disabilities by ethnicity that received service.	<ul style="list-style-type: none"> • Registered services - unduplicated • Each registered service separately
CC8	Race - Total <ul style="list-style-type: none"> • American Indian or Alaska Native • Asian • Black or African American • Native Hawaiian or Other Pacific Islander • White • Race Missing 	Total Caregivers of Children and Adults with Disabilities by race that received service. Race is duplicated caregiver count -- NOT unduplicated. Multi-racial caregivers are counted in each race indicated.	<ul style="list-style-type: none"> • Registered services - unduplicated • Each registered service separately
CC9	Minority Status - Total <ul style="list-style-type: none"> • Minority • Not Minority • Minority Status Missing 	Total Caregivers of Children and Adults with Disabilities by minority status that received service. CDC Source: Racial and ethnic minority populations are defined as: Asian American, Black or African American, Hispanic or Latino, Native Hawaiian and Other Pacific Islander, American Indian and Alaska Native.	<ul style="list-style-type: none"> • Registered services - unduplicated • Each registered service separately

Element Number	Data Element	Element Description	Services
CC10	Relationship - Total <ul style="list-style-type: none"> • Grandparents • Other Older Relative • Older Non-Relative • Relationship Missing 	Total Caregivers of Children and Adults with Disabilities by relationship that received service.	<ul style="list-style-type: none"> • Registered services - unduplicated • Each registered service separately
CC11	Total Caregivers of Children and Adults with Disabilities - At or Below Poverty	Count of Caregivers of Children and Adults with Disabilities at or below poverty that received service.	<ul style="list-style-type: none"> • Registered services - unduplicated • Each registered service separately
CC12	Age - At or Below Poverty <ul style="list-style-type: none"> • 55-59 • 60-64 • 65-74 • 75-84 • 85+ • Age Missing 	Count of Caregivers of Children and Adults with Disabilities at or below poverty by age group that received service.	<ul style="list-style-type: none"> • Registered services - unduplicated • Each registered service separately
CC13	Gender Identity - At or Below Poverty <ul style="list-style-type: none"> • Female • Male • Transgender • Gender Missing 	Count of Caregivers of Children and Adults with Disabilities at or below poverty by gender identity that received service.	<ul style="list-style-type: none"> • Registered services - unduplicated • Each registered service separately
CC14	Sexual Orientation - At or Below Poverty <ul style="list-style-type: none"> • Gay • Lesbian • Straight • Bisexual • Something else Sexual Orientation Missing 	Count of Caregivers of Children and Adults with Disabilities at or below poverty by sexual orientation that received service.	<ul style="list-style-type: none"> • Registered services - unduplicated • Each registered service separately
CC15	Rural Status - At or Below Poverty <ul style="list-style-type: none"> • Rural • Non-rural • Rural Status Missing 	Count of Caregivers of Children and Adults with Disabilities at or below poverty by rural status that received service.	<ul style="list-style-type: none"> • Registered services - unduplicated • Each registered service separately

Element Number	Data Element	Element Description	Services
CC16	Ethnicity - At or Below Poverty <ul style="list-style-type: none"> • Hispanic or Latino • Not Hispanic or Latino • Ethnicity Missing 	Count of Caregivers of Children and Adults with Disabilities at or below poverty by ethnicity that received service.	<ul style="list-style-type: none"> • Registered services _ unduplicated • Each registered service separately
CC17	Race - At or Below Poverty <ul style="list-style-type: none"> • American Indian or Alaska Native • Asian • Black or African American • Native Hawaiian or Other Pacific Islander • White • Race Missing 	Count of Caregivers of Children and Adults with Disabilities at or below poverty by race that received service. Race is duplicated caregiver count -- NOT unduplicated. Multi-racial caregivers are counted in each race indicated.	<ul style="list-style-type: none"> • Registered services _ unduplicated • Each registered service separately
CC18	Minority Status - At or Below Poverty <ul style="list-style-type: none"> • Minority • Not Minority • Minority Status Missing 	Count of Caregivers of Children and Adults with Disabilities at or below poverty by minority status that received service. CDC Source: Racial and ethnic minority populations are defined as: Asian American, Black or African American, Hispanic or Latino, Native Hawaiian and Other Pacific Islander, American Indian and Alaska Native.	<ul style="list-style-type: none"> • Registered services _ unduplicated • Each registered service separately
CC19	Relationship - At or Below Poverty <ul style="list-style-type: none"> • Grandparents • Other Older Relative • Older Non-Relative • Relationship Missing 	Count of Caregivers of Children and Adults with Disabilities at or below poverty by relationship that received service.	<ul style="list-style-type: none"> • Registered services _ unduplicated • Each registered service separately
CC20	Poverty Status - Minority <ul style="list-style-type: none"> • At or Below Poverty • Above Poverty • Poverty Status Missing 	Count of minority Caregivers of Children and Adults with Disabilities by poverty status that received service.	<ul style="list-style-type: none"> • Registered services _ unduplicated • Each registered service separately
CC21	Total Children Receiving Care	Count of children under the age of 18 receiving care.	<ul style="list-style-type: none"> • Registered services _ unduplicated • Each registered service separately

Element Number	Data Element	Element Description	Services
CC22	Total Adults with Disabilities Receiving Care	Count of adults age 18-59 with disabilities receiving care.	<ul style="list-style-type: none"> Registered services _ unduplicated Each registered service separately

3.4 Service Units (Title III B/C/D/E)

The Service Units (Title III B/C/D/E) Subcomponent includes the number of service units provided for each service.

- All data elements are required and single quantifier.
- All data elements are Numeric (integer) and not a coded element.

Element Number	Data Element	Element Description	Services
SU1	Services Units	Total service units provided for an allowable service. See Service Definitions and Attributes for unit type for each service.	Every Title III B/C/D/E service separately, except: Health Promotions-Evidence Based, Health Promotions-Non-Evidence Based, Other Services, Supplemental Services

3.5 Expenditures (Title III B/C/D/E) Subcomponent

The Title III Expenditures (B/C/D/E) Subcomponent includes data regarding State’s expenditures on Title III services.

- All data elements are required and single quantifier.
- All data elements are Numeric (2 decimal) and not a coded element.

Element Number	Data Element	Element Description	Services
EX1	Title III Expenditure	Total outlays/payments made by the SUA and/or AAA’s using OAA federal funds to provide an allowable service.	• Every Title III B/C/D/E service separately
EX2	Part B Expenditure	Part B portion of total outlays/payments made by the SUA and/or AAA’s using OAA federal funds to provide an allowable service.	• Health Promotion: Evidence-Based Services
EX3	Part D Expenditure	Part D portion of total outlays/payments made by the SUA and/or AAA’s using OAA federal funds to provide an allowable service.	• Health Promotion: Evidence-Based Services
EX4	Other - State Expenditure	Outlays/payments made by the SUA and/or AAA’s using state funds to provide an allowable service.	• Every Title III B/C/D/E service separately
EX5	Other - Non-State Expenditure	Outlays/payments made by the SUA and/or AAA’s not using OAA or state funds to provide an allowable service. Could include local and other federal funds, e.g. Medicaid Waiver.	• Every Title III B/C/D/E service separately
EX6	Program Income Received	Gross income received by the grantee and all sub grantees such as voluntary contributions or income earned only as a result of the grant project during the grant period.	• Every Title III B/C/D/E service separately

3.6 Title VII Expenditures (Chapters 3 & 4)

The Title VII Expenditures (Chapters 3 & 4) Subcomponent includes data regarding State’s expenditures on Title VII Chapter 3 – Elder Abuse Prevention and Chapter 4 – Legal Assistance Development programs.

- All data elements are required and single quantifier.
- All data elements are Numeric (2 decimal) and not a coded element.

Element Number	Data Element	Element Description
VII1	Title VII-3 Expenditure	Total outlays/payments made by the SUA and/or AAA’s using OAA federal funds for Elder Abuse Prevention (Title VII Chapter 3).
VII2	Title VII-3 Other - State Expenditure	Outlays/payments made by the SUA and/or AAA’s using state funds to provide for Elder Abuse Prevention (Title VII Chapter 3).
VII3	Title VII-3 Other - Non-State Expenditure	Outlays/payments made by the SUA and/or AAA’s not using OAA or state funds to for Elder Abuse Prevention (Title VII Chapter 3).
VII4	Title VII-4 Total Expenditure	Total outlays/payments made by the SUA and/or AAA’s for Legal Assistance Development (Title VII Chapter 4), regardless of funding source.

3.7 Legal Assistance (Title III B) Subcomponent

The Legal Assistance (Title III B) Subcomponent includes data regarding the state’s provision of legal assistance services by case type.

- All data elements are required and single quantifier.
- All data elements are Numeric (integer) and not a coded element.

Element Number	Data Element	Element Description
LA1	Total Number of Open Cases	Total Number of cases that were open during the reporting period. A consumer may have multiple open cases.
LA2	Number case - Income	Total Number of cases that were open during the reporting period with type of Income.
LA3	Number case - Health	Total Number of cases that were open during the reporting period with type of Health Care.
LA4	Number case - Long-term Care	Total Number of cases that were open during the reporting period with type of Long-term Care.
LA5	Number case - Housing	Total Number of cases that were open during the reporting period with type of Housing.
LA6	Number case - Ind Rights	Total Number of cases that were open during the reporting period with type of Individual Rights (Protective services/Abuse/Neglect/Defense of Guardianship/Age Discrimination).
LA7	Number case - Consumer/Finance	Total Number of cases that were open during the reporting period with type of Consumer/Finance.
LA8	Number case - Miscellaneous/Other	Total Number of cases that were open during the reporting period with type of Miscellaneous/Other.

3.8 Other Services (Title III B) Subcomponent

The Other Services (Title III B) Subcomponent includes data regarding State’s provision of a service for older adults using OAA funds (Title III B) that are not included the defined service categories.

- All data elements are required and single quantifier.

Element Number	Data Element	Element Description	Type	Codes and Values
OS1	Service Name	Name of a service provided using OAA funds that do not fall into the defined service categories for Title III B/C/D.	Alphanumeric String (30 characters)	N/A (not a coded element)
OS2	Service Unit Name	Service Unit type. e.g. Activity, hours, session	Alphanumeric String (15 characters)	N/A (not a coded element)
OS3	Service Domain	Category of service provided.	Numeric Code	01=Assistive Technology/Durable Equipment/Emergency Response 02=Consumable supplies 03=Home Modifications/Repairs 04=Elder abuse prevention/Elder Rights (T3 B only) 05=Health 06=Outreach 07=Public Education 08=Senior Centers/Socialization 09=Access not reported elsewhere 10=Other
OS4	Estimated Persons Served	Total Estimated Unduplicated Person served	Numeric (integer)	N/A (not a coded element)
OS5	Estimated Service Unit	Total estimated service units provided.	Numeric (integer)	N/A (not a coded element)
OS6	Title III Expenditure	Total outlays/payments made by the SUA and/or AAA’s using OAA federal funds to provide the service.	Numeric (2 decimal)	N/A (not a coded element)

Element Number	Data Element	Element Description	Type	Codes and Values
OS7	Other - State Expenditure	Outlays/payments made by the SUA and/or AAA's using state funds to provide the service.	Numeric (2 decimal)	N/A (not a coded element)
OS8	Other - Non-State Expenditure	Outlays/payments made by the SUA and/or AAA's not using OAA or state funds to provide the service.	Numeric (2 decimal)	N/A (not a coded element)
OS9	Program Income Received	Gross income received by the grantee and all sub grantees such as voluntary contributions or income earned only as a result of the grant project during the grant period.	Numeric (2 decimal)	N/A (not a coded element)

3.9 Supplemental Services (Title III E)

The Supplemental Services (Title III E) Subcomponent includes data regarding State's provision of a service for caregivers using OAA funds (Title III E) that are not included the defined service categories.

- All data elements are required and single quantifier.

Element Number	Data Element	Element Description	Type	Codes and Values
SS1	Caregiver Type	Supplemental Services was provided which caregiver type.	Numeric Code	01=Caregivers for Older Adults 02=Caregivers for Children 03 =Caregivers of Adults (age 18-59) with Disabilities
SS2	Service Name	Name of a service provided using OAA funds that do not fall into the defined service categories for Title III E	Alphanumeric String (30 characters)	N/A (not a coded element)
SS3	Service Unit Name	Service Unit type. e.g. Activity, hours, session	Alphanumeric String (15 characters)	N/A (not a coded element)

Element Number	Data Element	Element Description	Type	Codes and Values
SS4	Service Domain	Category of service provided.	Numeric Code	01=Assistive Technology/Durable Equipment/Emergency Response 02=Consumable supplies 03=Home Modifications/Repairs 04=Legal and/or Financial Consultation (T3 E support only) 05=Homemaker/chore/personal care (T3 E support only) 06=Transportation (T3 E support only) 07=Other
SS5	Estimated Persons Served	Total Estimated Unduplicated Person served	Numeric (integer)	N/A (not a coded element)
SS6	Estimated Service Unit	Total estimated service units provided.	Numeric (integer)	N/A (not a coded element)
SS7	Title III Expenditure	Total outlays/payments made by the SUA and/or AAA's using OAA federal funds to provide the service.	Numeric (2 decimal)	N/A (not a coded element)
SS8	Other - State Expenditure	Outlays/payments made by the SUA and/or AAA's using state funds to provide the service.	Numeric (2 decimal)	N/A (not a coded element)
SS9	Other - Non-State Expenditure	Outlays/payments made by the SUA and/or AAA's not using OAA or state funds to provide the service.	Numeric (2 decimal)	N/A (not a coded element)
SS10	Program Income Received	Gross income received by the grantee and all sub grantees such as voluntary contributions or income earned only as a result of the grant project during the grant period.	Numeric (2 decimal)	N/A (not a coded element)

3.10 Nutrition Services Incentive Program (NSIP)

The Nutrition Services Incentive Program (NSIP) Subcomponent includes data regarding the number of meals that were NSIP compliant and Title III A funding.

- All data elements are required and single quantifier.

Element Number	Data Element	Element Description	Type	Services
NS1	NSIP Service Units	Number of meals provided with in programs that were NSIP compliant.	Numeric (integer)	<ul style="list-style-type: none"> • Home Delivered Meals • Congregate Meals • Supplemental Services
NS2	NSIP Expenditure	Total outlays/payments made by the SUA and/or AAA's using Title III-A funding for meals.	Numeric (2 decimal)	<ul style="list-style-type: none"> • Home Delivered Meals • Congregate Meals • Supplemental Services